

Village Green Soapbox,
 Southend, Essex
 Architect: Cassion Castle
 Architects and Fleet Architects
 Cost: £40,000

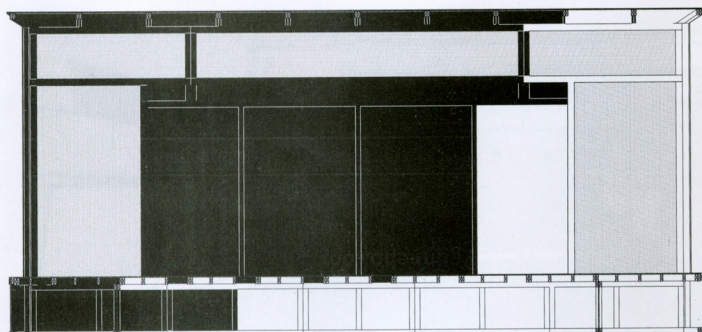
This 100m² pavilion – a performance stage for Southend’s annual Village Green Festival – was commissioned by arts organisation Metal Culture and funded by the Arts Council. Built from soft timber and polycarbonate, the Soapbox is designed to be erected and dismantled quickly by a team of six using hand tools. It is a low-tech solution specific to the site, purpose and budget, redeploying everyday hardware materials in an unexpected form. The design is technically innovative in its use of polycarbonate as a structural element. This gives the structure more simplicity, with the timber components providing vertical and horizontal beams and all diagonal bracing taken by the polycarbonate.

Below The stage can be easily erected and dismantled by a team of six

Right The stage comprises two sections: a performance area and a backstage space



KEITH COLLIE



Long section